



**ACE** | AMERICAN  
COLLEGE OF  
EPIDEMIOLOGY

# Annual Membership Meeting at 2024 Annual Meeting in Columbus

September 11, 2024



# President's Report: Highlights of 2024

- ▶ **Major Focus:** Moving College past the pandemic
- ▶ Increasing connections with members and professional community
  - Weekly e-News
- ▶ Removed presence from X
- ▶ Added LinkedIn



# President's Report: Highlights of 2024

## ▶ **Accomplishments**

- ▶ Developed new streamlined Strategic Plan
- ▶ Revamped our Mission and Vision
- ▶ NEW this year! Values



**ACE** | AMERICAN  
COLLEGE OF  
EPIDEMIOLOGY

# Strategic Plan: 2024 - 2026

# Major Goal 1: Operational Strength

- ▶ Ensure ACE has the infrastructure, programs, policies, and procedures in place to provide a platform for an impactful and sustainable future

## Major Goal 2: Impactful & Valuable Programming

- ▶ Build greater awareness of who we are, what we offer and what we do, reflecting the broad range of interests and concerns of our ACE members. Ensure that all ACE members are fully supported and provided an environment for growth, collaboration, and success

## Major Goal 3: **GROWTH**

We are making the commitment to GROW THE COLLEGE across every facet, e.g. leadership cadre and involvement, the work of our committees, quality of our programs, visibility, size of membership, and the advancement of research and improvement of public health

# President's Report: **Mission & Vision**

## **Mission**

Our mission is to empower and unite a resilient community of epidemiologists, including affiliates from related fields, dedicated to promoting equity and advancing science into practice.

## **Vision**

We envision a world where the value of epidemiology in public health is universally recognized, driven by a community dedicated to education, innovation, and transformative research.



# President's Report: Values - NEW in 2024

**INCLUSIVE** We unite experts in epidemiology and related fields, fostering diverse community contributing to public health.

**COLLABORATIVE** We prioritize teamwork, shared knowledge, and collective expertise to advance public health solutions

**LIFELONG LEARNING** We support the continuous development of all members through education and mentorship.

**DIVERSITY** We respect and draw strength from diverse thoughts, backgrounds, and cultures to enrich our approach to public health

**INNOVATION** We advocate for creative solutions to positively impact health policy and practice.

**MISSION** Our mission is to empower and unite a resilient community of epidemiologists, including affiliates from related fields, dedicated to promoting equity and advancing science into practice. We strive to foster a diverse and vibrant network that significantly contributes to the betterment of public health worldwide.

**MAJOR GOAL 1 – OPERATIONAL STRENGTH**

Ensure ACE has the infrastructure, programs, policies and procedures in place to provide a platform for an impactful and sustainable future.

**VISION** We envision a world where the value of epidemiology in public health is universally recognized, driven by a community dedicated to education, innovation, and transformative research.



**MAJOR GOAL 2 – IMPACTFUL & VALUABLE PROGRAMMING**

Build greater awareness of who we are, what we offer, and what we do, reflecting the broad range of interests and concerns of our ACE members. Ensure that all ACE members are fully supported and provided an environment for growth, collaboration, and success.

**VALUES**

**INCLUSIVE** We unite experts in epidemiology and related fields, fostering a diverse community contributing to public health.

**COLLABORATIVE** We prioritize teamwork, shared knowledge, and collective expertise to advance public health solutions.

**LIFELONG LEARNING** We support the continuous development of all members through education and mentorship.

**DIVERSITY** We respect and draw strength from diverse thoughts, backgrounds, and cultures to enrich our approach to public health.

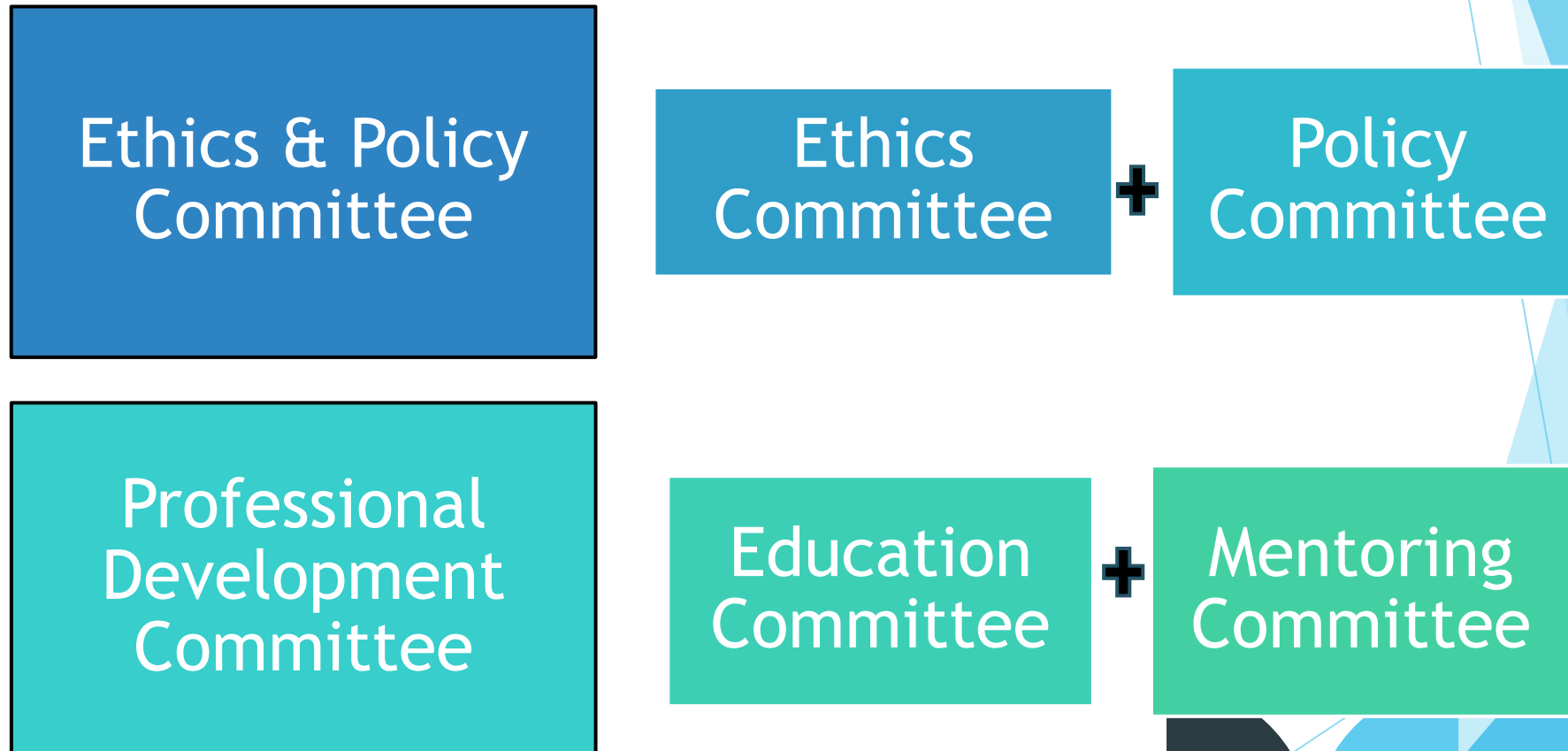
**INNOVATION** We advocate for creative solutions to positively impact health policy and practice.



**THE BIG IDEA: 2024 – 2026 GROWTH!**

We are making the commitment to **GROW THE COLLEGE** across every facet leadership cadre and involvement, the work of our committees, quality of our programs, visibility, size of membership, and the advancement of research and improvement of public health.

# Consolidated Committee Structure



# Committees: 11 total

Admissions

Associate  
Member

Awards

Communications

Equity &  
Inclusion

Ethics & Policy

Finance

Membership

Nominating

Professional  
Development

Publications

Reduced from 13 committees

“Committees are the life of the College”

Share your voice and ideas, **GET  
INVOLVED** in a committee!

# Affiliate category of membership

- ▶ Open to individuals who practice epidemiology in any capacity but may not meet the minimum criteria for admission to Member status. The American College of Epidemiology encourages all professionals who practice epidemiology or are interested in the discipline to be engaged even if they do not possess all credentials necessary to be recognized as Members.

# Treasurer's Report - Steve Waring

- ▶ **Summary:** The College's finances are solid.
- ▶ **2023 Year-End**
  - Closed out year with -\$10,430.32 loss.
  - Impact of Virtual Annual Meeting with lower-than-expected attendance. -
- ▶ **Current (as of 8/31/24)**
  - Assets: Up \$22,479.00 from 8/31/23
  - Income: Up \$62,765.85 from last year
  - Expenses: Up \$18,451.21 from last year
  - NET: Up \$44,314.64 from last year
- ▶ We continue to focus on strengthening major sources of income: Membership Dues, Publications/Journal Royalties, and Annual Meeting Registration & Sponsorship
- ▶ Please keep promoting the value of membership in ACE and attending our Annual Meeting.

# Treasurer's Report - Steve Waring

## ▶ INCOME SOURCE BREAKDOWN

SOURCE	% OF ACE INCOME
Membership Dues	49%
Publications	10%
Annual Meeting & Programs	32%
Investments	8%

## ▶ EXPENSE SOURCE BREAKDOWN

SOURCE	% OF ACE EXPENSES
Operations (Office, Technology, Insurance, etc.)	40%
Publications	20%
Annual Meeting & Programs	27%
Governance (Board & Committees)	13%





**ACE** | AMERICAN  
COLLEGE OF  
EPIDEMIOLOGY

# Presentation of the College's New Leaders

## Introducing:

- **President-Elect:** Bertha Hidalgo
- **Secretary:** Yvonne Michael
- **Fellow Directors:**  
Syed Ahsan Raza, Michael Wirth, & Peter Shields
- **Member Directors:**  
Toby Levin & Akshaya Bhagavathula
- **Associate Member Director:** Latasha Allen



**ACE** | AMERICAN  
COLLEGE OF  
EPIDEMIOLOGY

# Thank You Departing Board Members

- **Immediate Past President:** Melissa Bondy
- **Secretary:** Cathy Critchlow
- **Fellow Director:** Eyal Oren
- **Member Director:** Macarius Donneyong
- **Associate Member Director:**  
Tamara Chavez-Lindell



**ACE** | AMERICAN  
COLLEGE OF  
EPIDEMIOLOGY

# Committee Reports: *“The Lightning Round”*

Updates on Accomplishments & Next Steps

The background features abstract, overlapping geometric shapes in various shades of blue, ranging from light sky blue to deep navy blue, creating a modern and professional aesthetic.

# Admissions Committee Report 2023-2024

Matthew Bonner, Chair

# 2023-2024 Applications to ACE

- Application review meetings were held in November '23, February '24, April '24, August '24
- Total applications reviewed ( $N=93$ )
- New applications ( $n=47$ ):
  - ▶ 9 Fellow
  - ▶ 24 Member
  - ▶ 11 Associate Member
  - ▶ 3 Affiliate Member
- Applications for promotion ( $n=46$ )
  - ▶ 5 Emeritus
  - ▶ 31 Fellow
  - ▶ 10 Member from Associate Member

# Admissions policy and procedure review

- ▶ Changed application and review cycle from quarterly to triannually
  - ▶ Decompress the application review process time
- ▶ Changed the Board of Directors approval process for new Affiliate, Associate, and Member applications
  - ▶ The Board no longer reviews these application recommendations from the committee
- ▶ Changed the letter of support requirement for applications
  - ▶ Letters of support no longer necessary

# Major Goal/Focus for 2024-2025

- ▶ To continue improving the College's admissions process and make it more efficient
- ▶ Clarify the role of contributions to the College for promotion to fellow
- ▶ Develop policy on applications from individuals holding bachelor degrees in public health—concentration in epidemiology

# Thank You! ACE Admissions Committee

- ▶ **Annette Adams**
- ▶ **Denise Oleskie**
- ▶ James Torner
- ▶ Reza Alaghehbandan
- ▶ Sazid Khan
- ▶ Nelson Pace
- ▶ Duke Appiah (Vice-Chair)
- ▶ Membership Committee Liaison: Michael Scheurer



# Admissions Committee 2024-2025

- ▶ Interested in serving on the committee?
- ▶ please contact:
  - ▶ ACE Office ([Office@acepidemiology.org](mailto:Office@acepidemiology.org))
  - ▶ Matthew Bonner ([mrbonner@buffalo.edu](mailto:mrbonner@buffalo.edu))

# Associate Member Committee

Tamara Chavez-Lindell, Roxann Seepersad

## Advancements/Achievements in 2024

- ▶ ACE Roadmap adopted by Board and published on ACE website
- ▶ Successful ACE Foundation funding request for Associate Member outreach
- ▶ T-shirt design contest conducted; pre-distribution survey underway now

## Looking Ahead to 2025

Share your vision or goals for the year ahead.

- ▶ Complete development of welcome packet for new AMs
- ▶ Develop self-funding mechanism for new member merch – ACE store voucher?
- ▶ Host AM peer-review round-robins to strengthen peer network and confidence
- ▶ As always, increase AM enrollment and participation!

## How Members can help the Committee:

If in academia → encourage students to join ACE and get involved!

In other arenas → encourage junior colleagues to consider membership

Reach out to AM Chairs with ideas about shorter-term projects that build on students' strengths and meet their time constraints

# Awards Committee

Narges Khanjani

## **Advancements/Achievements in 2024**

- We completed reviewing the award applications for 2024, including the Early Career Epidemiologist Award, the Outstanding mentorship award and the Student paper prize.
- We will follow up with presenting the award winners in the ACE Newsletter and creating videos about the award winners and their outstanding achievements.

## **Looking Ahead to 2025**

- ▶ We are looking forward to recruiting more members to review the award applications for 2025.

# Communication Committee

Julie Smith Gagen, Rossi A Hasad, J Angela Malek, David Lilienfeld, Edward Trapido, David Kwok

## Advancements/Achievements in 2024

- ▶ Newsletters (Dr. Malek)
- ▶ Recommend ACE discontinue use of Twitter
- ▶ Committee conference presentation: **Pandemic Paradox: How Epidemiologists Weather the Storm of Public Scrutiny**

## Looking Ahead to 2025

- ▶ Develop a survey to define the ACE target population

## How Members can help the Committee:

- ▶ Join the committee!

# Ethics and Policy Committee

Committee Leader(s): Jennifer Salerno (Chair), John Holmes (Vice Chair)

## Advancements/Achievements in 2024 (To Date)

- ▶ Three sessions at ACE Annual Meeting: INEP-ACE, AI, Causation
- ▶ ACE Scholar: Scoping review feedback
- ▶ ACE in Action webinar
- ▶ INEP policy reviews
- ▶ Committee merger

## Looking Ahead to 2025

Share your vision or goals for the year ahead.

- ▶ Continue liaising with INEP
- ▶ Write-ups for the Annals of Epidemiology
- ▶ RFP opportunities

# Finance Committee:

Nicholas Ollberding (Chair)

## **Advancements/Achievements in 2024 (To Date)**

- ▶ Revisiting and updating the ACE investment policy to ensure alignment with our current goals, market conditions, and expectations.
- ▶ Assessing if current asset class allocation is optimally aligned with our investment policy and goals
- ▶ Assistance with the annual budget

## **Looking Ahead to 2025**

- ▶ Finalize modifications to the ACE investment policy and asset reallocation
- ▶ Identify potential small grant mechanisms that may help support annual meeting (travel, programing, etc.)

## **How Members can help the Committee:**

- ▶ Let us know if you have an interest in joining the committee!

# Membership Committee

Edwin Wijngaarden & Joel Begay

## Current Activity

- Conducted a successful “Bring ‘Em Back” Lapsed Member Campaign Including: e-notices, peer-to-peer outreach (the most effective method), and a few other tricks, sample verbiage with links, social media blitz, etc. This aligned with the launch of the Annual Meeting registration—which reinforced the VALUE of membership—those special membership rates for Columbus.  
*This initiative brought back 24 lapsed members across all membership categories! 2 of these had been lapsed 5 years.*
- Drafted first draft of an ACE Member Snapshot.  
*Sneak Peek in a minute!*

## Looking Ahead to 2025

Continued focus on enhancing the membership experience and to streamline committee work per ACE strategic goal of operational excellence

## How Members can help the Committee

Promote Membership! Invite Colleagues to join ACE today!



**ACE** AMERICAN COLLEGE OF EPIDEMIOLOGY

**MEMBER**  
**SNAPSHOT**

## Gender



## Geography



94% from the U.S.  
6% outside the U.S.

Other Graduate Degree  
12%

MPH  
19%

PhD (or doctorate)  
42%

MD  
27%

Highest Degree  
Held

## Areas of Concentration





# Minority Affairs Committee (MAC) NOW: Equity and Inclusion Committee (EIC)

Chair: David Huang

## Advancements/Achievements in 2024

- ▶ Developed and submitted a proposal to change the name and scope of the committee to the Equity and Inclusion Committee
- ▶ Planned and executed the MAC annual meeting workshop in three parts:
  1. Speaker and discussion on health equity and AI,
  2. Teambuilding/icebreaker, and
  3. Brainstorming/visioning for the renamed committee.
- ▶ Worked with ACE Scholar matched to the committee on a proposed project to develop educational materials for National Public Health Week.

## Looking Ahead to 2025

- ▶ Revamp committee website content to reflect the new name and scope.
- ▶ Execute ACE Scholar project during National Public Health Week (April 7-13, 2025).
- ▶ Increase membership and engagement in the committee through:
  1. Social media
  2. Major project (TBD)

## How Members can help the Committee:

- ▶ Encourage interested ACE members to join the Committee!

# Professional Development Committee (PDC)

Interim chair: Sandra Sulsky

## Advancements/Achievements in 2024

- ▶ Committee formed in May 2024 from Education and Career Mentoring Committees
- ▶ Developed and agreed on statement of purpose, foundational activities
- ▶ Identified preliminary goals for 2024
- ▶ Hosted two ACE Scholars
- ▶ ACE in Action Webinars: One Health Epidemiology; Role of Epidemiology in Law

## Looking Ahead to 2025

- ▶ Recruit members
- ▶ Identify vice-chair and subcommittee leaders
- ▶ Create a work plan for 2024
  - ▶ EpiVisionaries program
  - ▶ Facilitate mentor/mentee pairings
  - ▶ Coordinate “ACE in Action” webinar calendar
  - ▶ Create a mentoring and career development resource library for members
  - ▶ Journal club with Associate Member committee
  - ▶ Develop educational workshops
- ▶ Explore collaborations with other organizations

## How Members can help the Committee:

- Join the committee
- Become a mentor or a mentee
- Contribute ideas for ACE in Action
- Volunteer to lead a journal club meeting

# Publications Committee

Syed (Ahsan) Raza & Akshaya Bhagvathula

## Advancements / Achievements in 2024

- ▶ Formation of New Committee with 12 members. Had meetings in April, May, June, July
- ▶ Identified Best Paper Award published in Annals Epidemiology 2023
- ▶ Best Junior Investigator Best Paper published in Annals of Epidemiology 2023
- ▶ Coordinating Annual Meeting Poster Session and award / Organizing poster tours
- ▶ Updated Abstract submission template (Acceptance/rejection decision letters) by Elsevier
- ▶ Informational session by Elsevier on AI for Annual Meeting

## Looking ahead in 2025?

- ▶ Promote Publications on Social Media (LinkedIn & X, formerly Twitter)
- ▶ Highlight Salient Features of Interesting Papers
- ▶ Increase Visibility through a Dedicated Podcast
- ▶ Collaborate with Other Committees and Annals of Epidemiology Team for Enhanced Outreach

## How Members can help Committee

- ▶ Engage with Our Social Media Initiatives by Sharing and Commenting on Posts
- ▶ Contribute Ideas for Podcast Topics - Identify Guest Speakers
- ▶ Reviewers needed - Nominate Outstanding Papers for Awards

# Planning is Underway!

Melissa Bondy & Sara Tartof  
Co-Chairing the 2025 Planning  
Committee. *Join us!*

Endowed Lecturer will be:  
**Frederick P. Rivara, MD, MPH**

Seattle Children's Guild Association  
Endowed Chair in Pediatric Outcomes  
Research

Vice Chair and Professor,  
Department of Pediatrics

Adjunct Professor  
of Epidemiology

University of Washington



**ACE** | AMERICAN  
COLLEGE OF  
EPIDEMIOLOGY



# Pasadena California

**ACE ANNUAL MEETING**  
Hilton Pasadena, September 7-10, 2025

**WATCH FOR UPDATES IN THE  
MONTHS AHEAD...**

**SAVE THE DATE!**

# ACE Scholars Program

Jan M. Eberth, PhD, FACE

## **Advancements/Achievements in 2024 (To Date)**

- ▶ 5 ACE Scholars selected in 2023-2024
- ▶ 3 ACE Scholars completed action project to present at Annual Meeting
- ▶ 2 webinars held for ACE Scholars on topics related to leadership and fundraising

## **Looking Ahead to 2025**

Share your vision or goals for the year ahead.

- ▶ Revise ACE Scholars orientation materials to emphasize committee participation expectations and deliverable due dates
- ▶ Work with Career Mentoring Committee to create process to submit/review ACE Scholars' Annual Meeting presentations
- ▶ Select new cohort of ACE Scholars!

## **How Members can help the Committee:**

We are looking for members to help create webinars of topics of relevance to the ACE Scholars, ACE Committees & BOD members to mentor the Scholars and financial support for ACE Scholars to attend the Annual Meeting.

# What the ACE Foundation does for YOU!

Michele R. Forman, President: The ACE Foundation

- ▶ We provide grants to enrich member careers, enhance visibility of the ACE, and train future leaders as envisioned by the following ACE units:
  - ▶ The Associate Member Committee
  - ▶ The Mentoring and Education Committee
  - ▶ The Awards Committee
- ▶ We support the Annual Meeting by:
  - ▶ Funding the MAC Workshop
  - ▶ Awarding the Endowed Lecture
  - ▶ Supporting the ACE Scholars

Please donate to the ACE Foundation & thanks to all who joined us last night for the Reception @ The OSU Stadium



# Annals of Epidemiology

American College of Epidemiology

Patrick Sullivan, DVM, PhD, Editor-in-Chief, Emory University

Kate Williamson, Senior Publisher, Elsevier



Volume 72  
August 2022

## Annals of Epidemiology

ISSN 1047-2797  
ANNPEJ

### In This Issue

- Transactional sex, HIV and health among young cisgender men and transgender women who have sex with men in Thailand
- Relationship between BMI trajectories and cardiometabolic outcomes in postmenopausal women: a growth mixture modeling approach
- The where of when: Geographic variation in the timing of recent increases in US county-level heart disease death rates
- Home-to-hospital distance and outcomes among community-acquired sepsis hospitalizations
- Incidence, diagnoses and outcomes of ambulance attendances for chest pain: a population-based cohort study
- Racial discrimination is associated with greater arterial stiffness and carotid intima-media thickness: the ELSA-Brasil study
- Emotional distress among survivors of adolescent and young adult cancer or adult cancer
- Declining COVID-19 case-fatality in Georgia, USA, March 2020 to March 2021: a sign of real improvement or a broadening epidemic?
- Population-based associations between maternal pre-pregnancy body mass index and spontaneous and medically indicated preterm birth using restricted cubic splines in California
- Decreases in preterm birth during the first COVID-19 lockdown in France by gestational age sub-groups and regional COVID-19 incidence
- Stability of mental disorder prevalence estimates among school-aged children and adolescents: findings from the community-based project to learn about youth-mental health (PLAY-MH) and replication-PLAY-MH (Re-PLAY-MH), 2014–2017
- Corrigendum to 'Coronavirus testing disparities associated with community level deprivation, racial inequalities, and food insecurity in West Virginia'



**ACE** AMERICAN  
COLLEGE OF  
EPIDEMIOLOGY

# Annals of Epidemiology - By the Numbers

- ▶ Official journal of the American College of Epidemiology
- ▶ Peer-reviewed journal with Cite Score 7.7
- ▶ Annual manuscripts published: 150-200
- ▶ Median submission to final publication: 172 days
- ▶ Current special issues open for submissions: 3
  - ▶ Epi and implementation science
  - ▶ Health Equity
  - ▶ Epi and AI

Information on special issues





# Opportunities for involvement of ACE members

- ▶ Volunteer to be a peer reviewer
- ▶ Join the Annals Editorial Board to become a regular peer reviewer
- ▶ Follow the Annals of Epidemiology X account and retweet manuscripts of interest
- ▶ Subscribe to the Annals of Epidemiology podcast, download and listen!
- ▶ Submit your best work to Annals of Epidemiology
- ▶ Reach out to us with questions or comments!





**ACE** | AMERICAN  
COLLEGE OF  
EPIDEMIOLOGY

Thank You for Your Presence  
Enjoy this final day of the Annual Meeting!



**ACE** | AMERICAN  
COLLEGE OF  
EPIDEMIOLOGY

# The Presidential Address

Melinda C. Aldrich, PhD, MPH