

INSIDE THIS ISSUE

Message from the President 1
2026 Annual Meeting Update 2
Associate Member Committee 3
Equity and Inclusion Update..... 3
2026 ACE Awards..... 4



ACE OFFICE

American College of Epidemiology
230 Washington Avenue Ext.
Suite 101
Albany, NY 12203

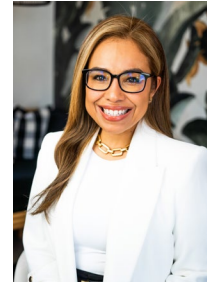
ph: 518.240.1210
fax: 518.463.8656
e: office@acepidemiology.org

The American College of Epidemiology was incorporated in 1979 to develop criteria for professional recognition of epidemiologists and to address their professional concerns.

ACE serves the interests of its members through sponsorship of scientific meetings, publications, and educational activities, recognizing outstanding contributions to the field and advocating for issues pertinent to epidemiology.



Message from the American College of Epidemiology President, Bertha A. Hidalgo, PhD, MPH, FACE



Dear ACE Community,

As I reflect on the first several months of my term as President of the American College of Epidemiology, I am filled with a deep sense of gratitude - for this community, for our shared purpose, and for the steady commitment I continue to see across our field.

Since September, we have been building - intentionally and collectively. From advancing plans for our Annual Meeting to strengthening our committees and launching new programming, the momentum within ACE is real. I am especially grateful to our members, partners, and sponsors whose support continues to make this work possible. Your engagement is what sustains this organization and allows us to grow in meaningful ways.

At the same time, we find ourselves operating in a moment that calls for clarity and resolve. Recent events have underscored the critical role of epidemiology in informing decisions that affect the health of populations. The importance of rigorous data, thoughtful interpretation, and a strong evidence base has never been more visible, or more necessary. As a field, we must continue to generate, communicate, and defend high-quality science, even when the environment around us is uncertain.

This is not new territory for epidemiology. Our discipline has always been resilient; evolving in response to emerging challenges while remaining grounded in scientific rigor and a commitment to improving population health. What is new is the scale and speed at which we are being asked to respond. And that is where this community matters most.

Looking ahead, I am excited about what we are building together. Our upcoming Annual Meeting will reflect both the depth of our science and the breadth of our impact, with expanded opportunities for professional development, dissemination and implementation science, and engagement across career stages. We are also continuing to think critically about how ACE can best support its members, not only as scientists, but as leaders, communicators, and advocates for evidence-based decision-making.

Importantly, this moment also calls on us to support one another in tangible ways. Across our field, colleagues are navigating funding disruptions, workforce changes, and loss of institutional support. Students and early-career epidemiologists - our future - are feeling this acutely. If you are able, I encourage you to consider contributing to ACE to help us:

- Provide support for members impacted by workforce reductions
- Expand travel awards for students and trainees who may have lost funding
- Sustain programming that supports training, mentorship, and professional development

Every contribution - of time, resources, or connection - helps strengthen our field. [DONATE HERE](#)

As we move forward, I encourage each of you to stay engaged - share your ideas, join a committee, invite others into this work, and help us identify new opportunities for partnership and growth. ACE is strongest when it reflects the voices and expertise of its members.

Thank you for your continued commitment to epidemiology and to this community. It is an honor to serve in this role.

Warmly,
Bertha

Bertha Hidalgo, PhD, MPH, FACE
President, American College of Epidemiology

2026 ANNUAL MEETING - UPDATE



Matthew Bonner and Pauline Mendola (Co-Chairs)



The American College of Epidemiology Annual Meetings is scheduled for September 14th through 17th in Buffalo, New York. Western New York and Buffalo have a long and storied history in Epidemiology.

Austin Flint, founder of the Buffalo College of Medicine, conducted an outbreak investigation of typhoid fever in north Boston, NY (1843) that John Snow cited in his treatise "On Cholera". In addition, several founding members of the College lived and work in Buffalo, including Saxon Graham, Abraham Lilienfeld, and Milton Terris at one time or another. More recently, the College has had several past presidents who either were students or on the faculty in the Department of Epidemiology and Environmental Health, School of Public Health and Health Professions, including Philip Nasca, John Acquavella, and Pauline Mendola, who just happens to be the current Chair of the Department, and the co-Chair of the Annual Meeting Planning Committee.

This year we are proud to announce that Dr. Peter Hotez will be our Keynote Speaker!

Dr. Hotez is the Dean of the School of Tropical Medicine at Baylor College of Medicine. His research is focused on vaccine development and he is the author of several books including *Vaccines Did Not Cause Rachel's Autism* (2018), *The Deadly Rise of Anti-Science* (2023), and *Science Under Siege* (2025) with Michael E. Mann. Dr. Hotez has won numerous awards for his work on vaccine development and as a public defender of biomedical sciences.

Late summer is the ideal time to visit Buffalo and see Niagara Falls. If natural wonders are not your thing, Buffalo is also renowned for its architecture. Visit Frank Lloyd Wright's Darwin Martin House or the art deco inspired City Hall. Also consider visiting Delaware Park, the largest of three county parks designed by Olmsted and Vaux in the late 1860s. Named one of the "best places to go" by Conde Nast Traveler in 2026 – don't miss out on the opportunity to visit the "City of Good Neighbors" where the welcome is warm, the wings are hot and the people are cool!

We look forward to seeing you in September!

ACE 2026
Annual Conference

SEPTEMBER 14-17, 2026
— BUFFALO, NEW YORK —



ACE ASSOCIATE MEMBER COMMITTEE



*Latasha Allen, MSPH MEDM (Chair)
Epidemiologist/ DrPH Candidate
Indiana University*



*Regina Nechi, PhD Candidate (Vice-Chair)
College of Pharmacy
Ohio State University*

The responsibilities for these roles include:

Secretary – This role is to take notes during committee meetings, keep meeting attendance. This member would be required to attend all committee meetings.

Activities Chair – This role is to organize events/activities for the committee meetings. May be asked to attend the Annual Meeting planning meetings and report back to the Chair.

The next committee meeting will be on **June 2, 2026**, at 6pm ET. It is also possible to connect with committee members on the ACE Membership Circles on the ACE membership portal at [American College of Epidemiology](#).

The **ACE Associate Members Committee** is seeking members to volunteer for two new committee roles: Secretary and Activities Sub-Committee Chair. If you are interested in serving in one of these volunteer roles, please contact Latasha Allen (Chair, allenlat@iu.edu) and Regina Nechi (Vice Chair, amaka.nechi@gmail.com).

UPDATES FROM THE EQUITY AND INCLUSION COMMITTEE



Sophia I. Allen, Ph.D., M.B.A. (Chair)

The Equity and Inclusion Committee (EIC) of the American College of Epidemiology (ACE) assesses diversity and inclusion in epidemiology, promotes increased diversity and inclusion in ACE, and recommends actions to increase research addressing health equity/disparities and related fields. In doing so, the EIC advances the work of ACE and the field of epidemiology to ensure a more balanced, engaged, and innovative profession by working to remove barriers to full equity and inclusion. Feel free to reach out to me if your ACE committee is interested in working together on equity and inclusion actions.

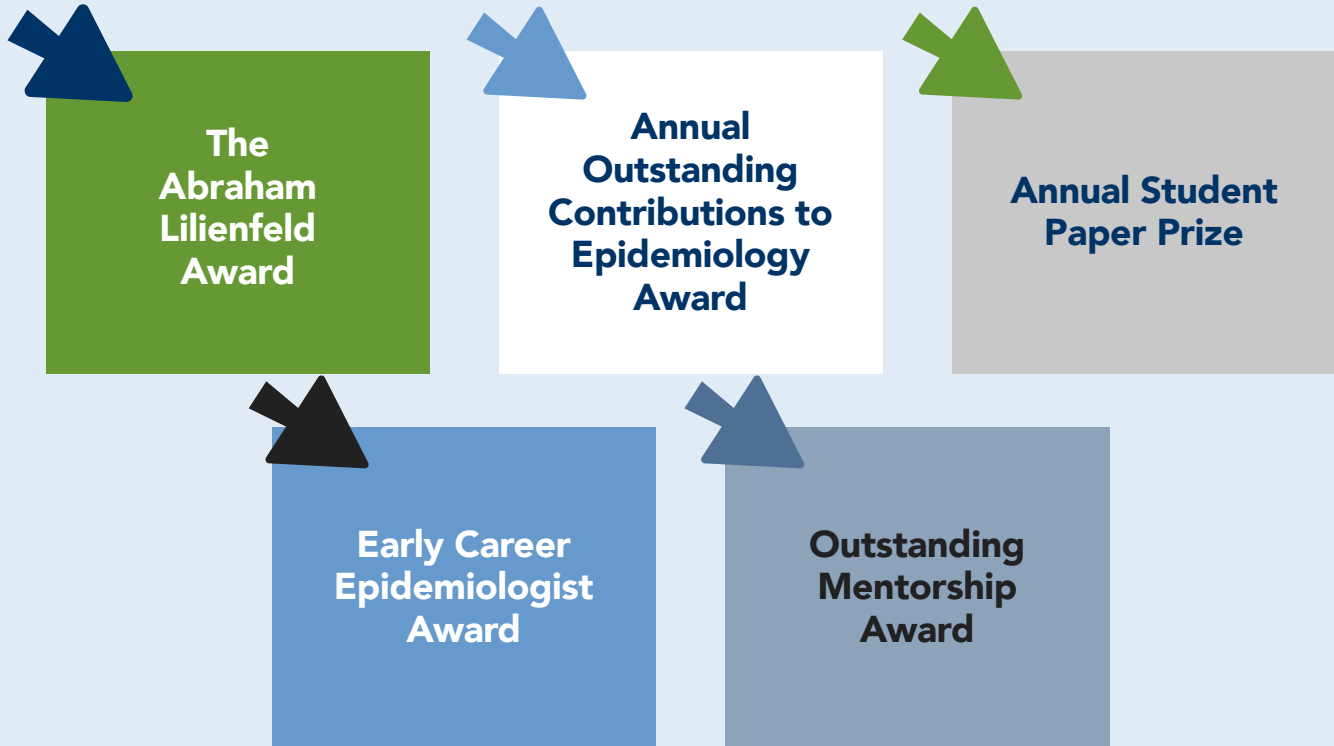
The EIC is seeking a volunteer to fill the role as Vice Chair. The role is responsible for assisting the EIC Chair with the planning and execution of all EIC related tasks. The term of the Vice Chair is three years. Feel free to reach out to me for more details if you are interested.

The EIC is excited to have two ACE Scholars working with us this year. Anderson Lu is a doctoral student at Stanford University and Heba Mohamed is a master's student at Harvard University. They are working on a project titled: "Epi for Equity: Translating the NIMHD Framework into Practice." This project will create a user-friendly implementation tool—a guide, checklist, or interactive resource—to support epidemiologists in integrating the NIMHD framework into study design, data collection, analysis, and dissemination. Findings from the project will be presented at the ACE Annual Meeting in September.

We are currently planning the EIC workshop for the ACE Annual Meeting and welcome you to join the monthly meetings that are scheduled virtually for the second Friday of every month from 3-4pm (Eastern). Feel free to reach out to me with any questions/suggestions at lexaccrd@gmail.com. Wishing you all a wonderful spring!

2026 ACE AWARDS

The ACE Awards Committee shall select recipients for the following professional awards issued by the College:



Required Documentation:

Letter of Nomination (*addressing requirements of the award*)

Letters of Support (*up to two*)

Candidates' Curriculum Vitae or Professional Biography

Any additional information that supports the nomination

**Please send the required documents as PDF files attached to:
nkhanjan@ttuhsc.edu & copy office@acepidemiology.org**

Narges Khanjani, MD, PhD, FACE, ISEE Fellow
Awards Committee Chair
American College of Epidemiology
nkhanjan@ttuhsc.edu

**Applications for the 2026 Awards
will be accepted through June 15, 2026
at 5:00 pm (ET)**