



President's Letter



ACE is a small organization with big ideas. It's wonderful that we have so many members involved in bringing these ideas to fruition...

Calendar of Events

June 21-24, 2006
2006 Congress of Epidemiology
Westin Seattle Hotel
Seattle, WA

Please mark your calendars for the 2006 Congress of Epidemiology: June 21-24 at the Seattle Westin Hotel. This Congress is sponsored, co-sponsored or supported by 18 different epidemiology societies...

Top Stories – 2006 Congress Highlights

Award Ceremony and Wine Reception for Outstanding Epidemiologists
ACE Enjoy and Learn Reception: June 23, 5-7 pm
Roger Bernier, Awards Committee Chair

Prevented by Hurricane Katrina from meeting in New Orleans last year, the American College of Epidemiology was challenged but not defeated. In response, the College has worked to honor the many outstanding epidemiologists who were slated to receive ACE awards in 2005...



The awardees will be honored in Seattle at a special "Enjoy and Learn" wine reception to be held Friday evening June 23 at the Seattle Westin Hotel from 5-7 pm. All of the Congress attendees will be invited to attend and as a special attraction the reception will feature local wines from Washington State free of charge to attendees...

The winners of the ACE awards to be honored in Seattle are:

- Robert Hoover, the Abraham Lilienfeld Award.
Godfrey Oakley, the Outstanding Contributions to Applied Epidemiology Award
Marlene Goldman, ACE Distinguished Service Award
Jess Kraus, ACE Distinguished Service Award
Pauline Mendola, the Excellence in Student Mentoring Award
Suzanne Gilboa, Student Prize Paper Award.

What Constitutes A Good Reviewer?

Seminar: June 24
De-Kun Li



When you are asked to review grant applications, have you ever wondered whether you have met the expectations of the funding agency or done a good service to the applicants? As an applicant, have you ever wondered how (the heck) the reviewers arrived at their conclusions and scores? Reviewers play a crucial role in determining the types of research projects to be funded...

If you have given this topic much thought and would like to be one of the speakers, please contact Dr. De-Kun Li, at dkl@dor.kaiser.org.

Career Mentoring Forum

Luncheon: June 24
Martha Linet

A few years ago, the College created a new membership category, Associate Members, for students enrolled in doctoral programs in epidemiology. To assist these new ACE members in their professional development, the Membership Committee (chaired by Lorann Stallones) created a subcommittee to address scientific and career mentoring needs of doctoral students...



The Mentoring Task Force is organizing a Career Mentoring Forum to be held during an ACE-sponsored luncheon on Saturday June 24 at the 2006 Congress. The Forum will feature epidemiologists working in academia, the private sector, federal government and state epidemiology positions as well as a second year Epidemic Intelligence Service (EIS) officer and a current post-doctoral fellow...

Poster Judges Needed

Robert McKeown



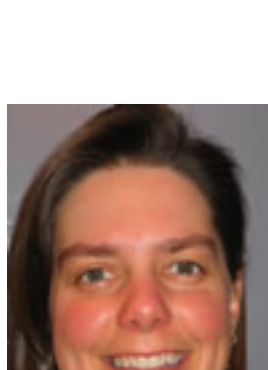
The 2nd North American Congress of Epidemiology is fast approaching. In addition to the pre-conference workshops, plenary sessions, and 36 symposia reflecting, we expect to exhibit over 800 research posters on a broad range of topics. We want to recognize the three best posters in each of the three poster sessions, but to do that we need poster judges and lots of them...

presentations of research in posters.

Student Events

Melinda Aldrich

A number of student events and opportunities are happening during the conference. Prior to the meeting, ACE, IGES and SER are hosting pre-meeting workshops. Good news for Associate Members as they will be able to attend the ACE workshops for 20% of the listed price! The Congress will officially open Wednesday evening (June 21) with a reception for students, a terrific time to mingle with your student peers...



Details regarding the student events and sign-ups for volunteer opportunities can be found on the Congress website (http://www.epicongress2006.org/students.html). I encourage you to take advantage of these many opportunities and register early to reserve your lunch ticket.

In the News

University of Michigan Epidemiology Professor Sandro Galea is featured in Time Magazine's March 20 Issue. The article is entitled "The Disease Detectives."

Jennifer Fergenbaum, an Associate member from the University of Toronto, was the co-recipient of the David Hewitt Award for 2005, which is given to a student in Public Health Sciences who has contributed substantially to the intellectual and social life of the Public Health Sciences body...

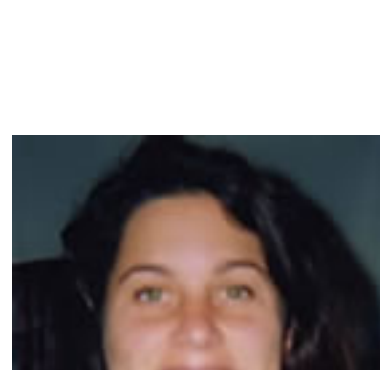
From the Board of Directors

Opportunities for Associate Members!

Jennifer Fergenbaum, Associate Member Representative

The process of identifying and nominating individuals to be elected as the next Associate Member student representative to the ACE Board of Directors will soon begin!

As the first student representative, I was given the unique opportunity to help define the role. I have focused on action items that would facilitate continuity for the role and outlined opportunities for Associate Members to communicate with each other, become more involved with ACE activities, and benefit from ACE membership. Recently, I attended the mid-year Board meeting held in Atlanta, GA. At this meeting, the Board agreed upon some initiatives to directly benefit Associate Members...



Part of the role of the next Associate Member student representative would be to help refine and implement some of the long-term recommendations including:

- soliciting Associate Members by a short survey of their needs, expectations and what they would want to gain from ACE, compiling these responses and presenting them to committee chairs, and helping to implement a process to 'match' Associate Members with ACE activities
helping to maintain a job bank for use by junior investigators
planning ways to encourage graduate students to become Associate Members

There are emerging ways in which students can benefit from being an Associate Member and getting involved with ACE activities. In particular, the role of student representative has provided me with new and exciting learning opportunities; has enabled me to be involved with the Education Committee and offer input in workshop planning; and unlike other organizations, has provided me insight into the professional practice of epidemiology.

I hope through sharing some of the initiatives of the Associate Member student representative I have stimulated your interest in applying for membership and the position.

Committees

Minority Affairs Committee

Jorge Ibarra, Committee Chair

The Minority Affairs Committee (MAC) has integrated existing members with newly interested college members. This led to a much expanded Committee, now with 16 active members. The MAC members meet by phone once a month where members review existing general ACE guidelines and discuss new initiatives and related action steps. The main interest of the MAC is fostering greater diversity within ACE and promoting innovative ideas that translate into action that helps to eliminate health disparities...

Membership Committee: The Member-Get-A-Member Campaign

Jonine Bernstein, Committee Chair



A key duty of the ACE Membership Committee is membership recruitment and retention. We welcome input on the best way to accomplish these important duties! Currently, we launched a "Member-Get-a-Member Campaign", where individuals contact known lapsed members to find out the reasons for non-renewal and to urge them to consider rejoining. We plan to measure the results to assess the impact of the campaign.

For the "Member-Get-a-Member Campaign" to be most successful and comprehensive, we need the entire ACE membership to recruit and to maintain members. The Membership Committee has begun to develop a protocol for the initial contact and follow-up. We plan to work with the Board to determine the best strategy for reaching to the membership at large.

We have also discussed developing a second questionnaire for the Deans/Chairs of Schools of Public Health and Chairs/Directors of Departments of Epidemiology who are not members to determine their attitudes regarding ACE membership. Please contact me, bernstet@mskcc.org with your input and ideas for ways to execute these efforts.

Commentary

It's time to make your travel plans for the 2006 Congress in Seattle. Many volunteers have worked tirelessly to organize workshops, symposia, lunches and receptions to make this meeting a reality. Thank you! Please consider writing your impressions of the Congress for the next newsletter. Carol Burns, Editor (cburns@dow.com).

ACE News is published by the American College of Epidemiology

Editor: Carol Burns, cburns@dow.com

For e-mail or other address changes, contact Angela Kite, astockburger@olsonmgt.com
Visit the ACE website at www.acepidemiology.org

ACE
1500 Sunday Drive, Suite 102, Raleigh, NC 27607
Phone (919) 861-5573, Fax (919) 787-4916