

**In This Issue**

[Message from the President](#)

[2014 Call for Abstracts](#)

[Nominating Committee calls for nominations for officers](#)

[Awards Committee calls for nominations](#)

[Associate Membership](#)

[2013 Award Winners](#)

[Join the International Epidemiology Association](#)

[Annals of Epidemiology moving to online only](#)

**Calendar**

[2014 ACE Awards and Student Prize Paper Nominations, April 30, 2014](#)

[Call for Abstracts, May 5, 2014](#)

[2014 ACE Annual Meeting, September 7-9, 2014](#)

**Fellows Corner**

Newly Appointed Fellows

Fall and Winter 2013-14

Ike Okosun  
Suzanne Lea  
Ka He  
Larry Segars  
Lorene Nelson  
Paul Terry  
Sean Hennessy

**Message from the President  
Ross Brownson**



Greetings ACE members!! I am delighted to write this note as we begin a new year.

We had an exciting and productive meeting this past fall in Louisville. There were outstanding sessions, insightful workshops, and a memorable reception on the Belle of Louisville (the oldest operating

steamboat in the United States). I want to thank Rick Baumgartner and his team for their superb organizational efforts as our local host. We look forward to another terrific meeting this coming September in Silver Spring, Maryland. The timely theme is "[Making Epidemiology More Consequential.](#)"

These are the highlights of some of our current activities.

Based on a charge from Past-President Ed Trapido, a strategic planning committee has produced a draft Plan. The committee is chaired by Marie Swanson and its members include: Alberto Caban-Martinez, Elizabeth Fontham, Julie Goodman, Robert McKeown and Victor Schoenbach. The Plan, a blueprint for our next five years, is outstanding and articulates six core goals as the College:

1. Advocates policies and actions that enhance the science and practice of epidemiology and its impact on the field of public health.
2. Promotes the development and dissemination of tools and methods to enhance translation of epidemiology into policy.
3. Promotes the professional development of epidemiologists through educational initiatives.
4. Recognizes and promotes excellence in epidemiology.
5. Develops and maintains an active and diverse membership of Fellows, Members, and Associate Members from all fields and settings where epidemiologists practice.
6. Establishes and maintains financial stability.

Currently the Plan is being reviewed by the ACE committees, and soon we will post the draft document for review by the full membership. Stay tuned for that posting.

At its September 2013 meeting, the board endorsed a new council. Led by David Lilienfeld, the Council on the History of Epidemiology will assure preservation of materials of significance to the history of epidemiology and provide a forum for discussions to enhance the visibility of the history of epidemiology. We will have more on this important council in the next newsletter. In the meantime, if you want more information or wish to help with the Council, you may email: [council.for.the.history.of.epi@gmail.com](mailto:council.for.the.history.of.epi@gmail.com)

Finally, we are seeking to involve more ACE members in a variety of activities. Most of the vital work of ACE is conducted via our committees and a number of committees are seeking new members. Please consider becoming more involved in one or more of the following by: 1) reviewing for the Annals of Epidemiology; 2) reviewing abstracts for the ACE annual meeting; 3) judging posters at the ACE annual meeting; or 4) assisting in annual meeting planning

I'll end by THANKING YOU for your service to ACE and the broader profession of epidemiology. If you have ideas on how we can improve the work of ACE, please contact me.

Best wishes for 2014.

---

## Top Story

### ACE 2014 Call for Abstracts



The American College of Epidemiology invites the submission of abstracts for consideration for poster presentations at our annual meeting, which will be held at the **Sheraton Silver Spring Hotel, Silver Spring, MD, September 7-9, 2014.**

The theme of the meeting this year is "[Making Epidemiology More Consequential.](#)" Poster presentations provide an opportunity for participants in the ACE annual meeting to share their work with interested colleagues in an informal, relaxed setting. To submit an abstract, authors do not need to be a Member or Fellow of ACE.

Poster sessions are prominently scheduled during the ACE meeting and several posters are selected for merit awards. Abstracts are judged on their content and presentation. Cash awards are given for the best abstracts authored by professional epidemiologists. A separate set of cash awards are given for the best abstracts authored by students. Additionally, three abstracts will be selected for podium presentations.

Posters addressing the meeting theme are particularly encouraged; however, submissions from other areas of epidemiology are also welcome. Accepted abstracts will be published in the program and the Annals of Epidemiology. The deadline for abstract submission is **May 5, 2014**. All abstracts must be submitted on-line. Instructions for abstract submission will be posted on ACE's website

[www.acepidemiology.org](http://www.acepidemiology.org)

Notification regarding the status (accepted or rejected) of all abstracts will be sent to the presenting author of the abstract by mid-June 2014.

---

## Committees

### **Nominating Committee calls for nominations for officers**

The ACE Nominating Committee will recommend candidates for President-Elect and the Board of Directors to the Board who will make the determination of the final slate, which will be voted on by the membership, with the results announced at the Annual Meeting. Officers to be elected include the President-Elect, who must be a fellow with recent service on the Board of Directors, and several members of the Board of Directors. Two slots on the Board must be filled by ACE Fellows and the remaining open slot is reserved for an ACE Member.

Other officers will be elected by the Board of Directors; these candidates will be recommended by the Nominating Committee. If you would like to recommend someone for President-elect or Board of Directors, please send your recommendation, with rationale, no later than Feb 15, to Robert McKeown, Chair of the Nominating Committee at [rmckeown@mailbox.sc.edu](mailto:rmckeown@mailbox.sc.edu).

## **Awards Committee calls for nominations**

ACE has the honor to select and recognize several of its members each year for their achievements and contributions. In addition to the Annals Award for the best paper published in Annals of Epidemiology, the College confers the Abraham Lilienfeld Award, the Outstanding Contributions to Epidemiology Award, and the Student Paper Prize. This year, a special award will also be conferred, to recognize a major contribution to epidemiology through policy avenues. Descriptions and eligibility criteria are provided, below. Nominations for these prestigious awards are due by April 30, 2014, and may be submitted by email to the Awards Committee (<http://acepidemiology.org/content/awards>).

### **Abraham Lilienfeld Award**

The Lilienfeld Award is the College's most prestigious prize. It is given in honor of Abraham Lilienfeld, to recognize senior epidemiologists who have shown leadership and made extraordinary contributions to the field of epidemiology. The award winner will have the opportunity to address the College during the Annual Meeting Awards Luncheon, and will be recognized as lifetime Honorary Fellow of the College.

[Abraham Lilienfeld Award](#)

### **Outstanding Contributions to Epidemiology Award**

Active epidemiologists with outstanding contributions to the field in the development of methods, in etiologic research or in applied epidemiology are eligible to be nominated for the Outstanding Contributions to Epidemiology Award. The award winner will have the opportunity to deliver a talk at the Annual Meeting, and will receive an honorarium of \$3,000.

[Outstanding Contributions to Epidemiology Award](#)

### **Student Paper Prize**

Students currently enrolled in a Master's or doctoral program in epidemiology, or those who have recently completed a degree, have a special opportunity to have their research recognized for its quality and rigor. Students must be currently enrolled in Masters or doctoral epidemiology training programs, or have completed training no earlier than January 1, 2014. The submitted paper should contain the findings of original research conducted by the student during training. In addition to financial assistance to attend the Annual Meeting, the author of the Student Prize Paper will have the opportunity to present the work during the Annual Meeting, and will receive expedited review of the paper for publication in the Annals of Epidemiology.

[Student Paper Prize](#)

## Special Policy Award

This year, the College wishes to recognize the potential to exert a positive influence on the practice of epidemiology through policy formulation, including opening lines of funding for epidemiology research. Nominees eligible for this award are senior leaders who have made extraordinary contributions with a demonstrable impact on the field of epidemiology through their influence and activities. The nominee need not be trained in epidemiology. Self-nominations are not accepted. The recipient of this award will have the opportunity to address the College and will be recognized during the awards banquet during the Annual Meeting.

## Nomination Procedure

- Nominations must be made by an active ACE member (Associate, Member, Fellow, Honorary Fellow or Emeritus)
- Nominations consist of a letter highlighting the achievements and/or contributions of the nominee pertinent to the award, and a current CV for the nominee or professional statement for nominees for the 2014 Special Policy Award.
- The nominator may include up to two supporting letters.
- Please supply complete nomination packages, only.
- **The deadline for receipt of all nominations is April 30, 2014.**

---

## Associate Membership

### Sophia Allen and Shervin Assari



Greetings Associate Members! The year 2014 for us is the year of so many exciting initiatives that help the Associate Member Committee meet its goals. As your new Incoming and Outgoing Associate Directors, Shervin and I have been continuing the work of the committee with planning and implementing the Associate Member Annual Survey (thank you for participating!), and maintaining a listserv that connects Associate Members with newly available post-doctoral and junior faculty positions. We are also closely working to

increase active participation of Associate Membership, developing manuscripts to publish in the Annals of Epidemiology, and revitalizing the Journal Club. We hope to announce the schedule of the journal clubs in the next newsletter.

Our priority this year is mentoring. With direct guidance of the ACE President, and in collaboration with the Career Mentoring Committee, we have recruited not one...not two...but six Associate Member Advisors to help be mentors, advocates and role models for Associate Members. Our new advisors are Cathy Critchlow, Christine Branche, James Gurney, Robert Morgan, Alfred Rimm, and Patrick Tarwater.

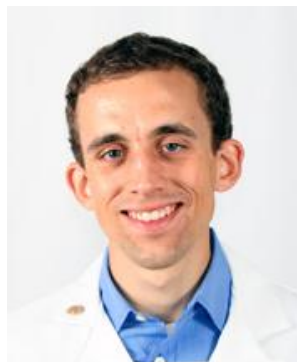
The Associate Member Committee remains active, meeting every other month. We encourage you to join our calls and increase your participation within our committee and the College. Many thanks to those who participated in the bimonthly calls and the Associate Member Annual Survey, which helps to shape many important decisions for our committee. We are always looking for members interested in leadership roles so please contact us!

We encourage you to email us at [aceassocmember@gmail.com](mailto:aceassocmember@gmail.com), with any feedback, suggestions for improvement, personal academic/professional news (e.g., publications, new jobs, promotions, etc.) and job announcements; we would love to hear from you!

Finally, please remember to "Like" our Facebook page [www.facebook.com/joinACE](http://www.facebook.com/joinACE); connect with us on LinkedIn <http://www.linkedin.com/pub/american-college-of-epidemiology/61/46/872>; and follow us on our new Twitter account @Join\_ACE; for updates and announcements.

---

### **Winner of the Amazon Kindle Display e-Reader**



The Associate Members Committee has selected the winner of the Amazon Kindle Display e-Reader 6" from the entries submitted for the 2013 Associate Member Annual Survey. The lucky winner is Matthew Rysavy from the University of Iowa, Carver College of Medicine. Congratulations, Matthew!

## 2013 Award Winners

The American College of Epidemiology Awards Committee and Publications Committee congratulate the winners of American College of Epidemiology Prizes in 2013. These prizes were awarded at the American College of Epidemiology Annual Meeting in Louisville, KY in September, 2013.

### Abraham Lilienfeld Award

The American College of Epidemiology's most prestigious award is given in honor of Abraham Lilienfeld, outstanding teacher, scholar, and founder of the American College of Epidemiology.



Michael B. Bracken, PhD, MPH, FACE, Susan Dwight Bliss Professor of Epidemiology, Yale University

### Student Prize Paper Award



Bianca Malcolm, PhD, MPH, Associate Service Fellow, National Center for Health Statistics  
"The spatiotemporal characteristics of seasonal influenza in the United States, 1968-2008"

### Outstanding Contributions to Epidemiology Award



Professor Dame Valerie Beral, DBE, AC, FRS, Director of Cancer Epidemiology Unit, University of Oxford, Oxford, England

## Annals of Epidemiology Best Paper Award



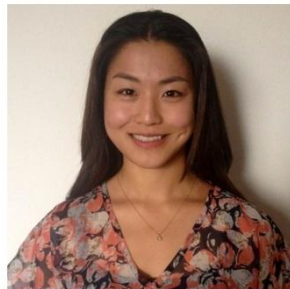
Thaddeus J. Haight, PhD, University of California at Berkley, "Alzheimer's Disease Neuroimaging Initiative. Relative contributions of biomarkers in Alzheimer's disease." Ann Epidemiol. 2012 Dec;22(12):868-75

### Best Poster



Eric DeRycke, MPH, National Cancer Institute, "Cancer epidemiology consortia network analysis."

### Best Student Posters



Kayo Togawa, MPH, City of Hope Comprehensive Cancer Center, "Symptoms of arm lymphedema and its effects on health-related quality of life among disease-free female breast cancer survivors."





Duke Ruktanonchai, MD, Texas Department of State Health Services, "Impact of Aerial Insecticide Spraying on West Nile Virus Disease - North Texas, 2012."

---

## Join the International Epidemiology Association

ACE is pleased to announce and encourage a partnership with the International Epidemiological Association (IEA). ACE members may join IEA at a discounted joint membership rate. IEA works on a broad range of substantive and methodological areas in epidemiology and public health. The benefits available to joint members include all benefits of a fully-paid regular membership with the exception of receiving the *International Journal of Epidemiology* in electronic form rather than print.

Joint Memberships for ACE members are \$25 USD. Join online at [www.ieaweb.org](http://www.ieaweb.org).

---

## *Annals of Epidemiology* moving to online only



*Annals of Epidemiology*, the Official Journal of the [American College of Epidemiology](#) is moving to online-only subscription beginning January 2014. Online subscriptions will be included in the annual membership dues. Moving to online subscriptions will enable us to keep dues low and has obvious environmental benefits. Print subscriptions will still be available on request for a nominal \$15

charge.

For online subscribers, full-text articles are available from 1998 to the present. Access to abstracts is complimentary. [Access to full text is available to ACE Members.](#)

---

## Opportunities to contribute to the College

There are 13 standing committees in ACE and many of them are involved in exciting projects and initiatives that would benefit from your participation. Email Joe Holbrook at [holbrookjoe@gmail.com](mailto:holbrookjoe@gmail.com) if you are interested in making new connections, forming new professional relationships, and becoming more active within the organization.

ACE News is published by the American College of Epidemiology

Editor: Joe Holbrook,

[holbrookjoe@gmail.com](mailto:holbrookjoe@gmail.com)

For e-mail or other address changes, contact

Mirjam Zanon, [info@acepidemiology.org](mailto:info@acepidemiology.org)

Visit the ACE website at [www.acepidemiology.org](http://www.acepidemiology.org)